



**GLOBAL<sup>®</sup>**  
FURNITURE  
COMPANY

**School Furniture**  
2024 / 2025

Established in Egypt in 2015, GFC specializes in manufacturing furniture for schools, theater halls, and laboratories. It also provides alternatives in terms of designs, sectors, and accessories to suit customers' needs.

GFC has provided the operating production capacity, which contributed to the company's progress and made our work more professional, which increases the size of our successes along with the satisfaction of our customers.

We offer as much as we can through our experience in projects and dealing with the challenges and obstacles we face in each project. The company has worked in many fields implementing a big number of projects for the public and private sectors.

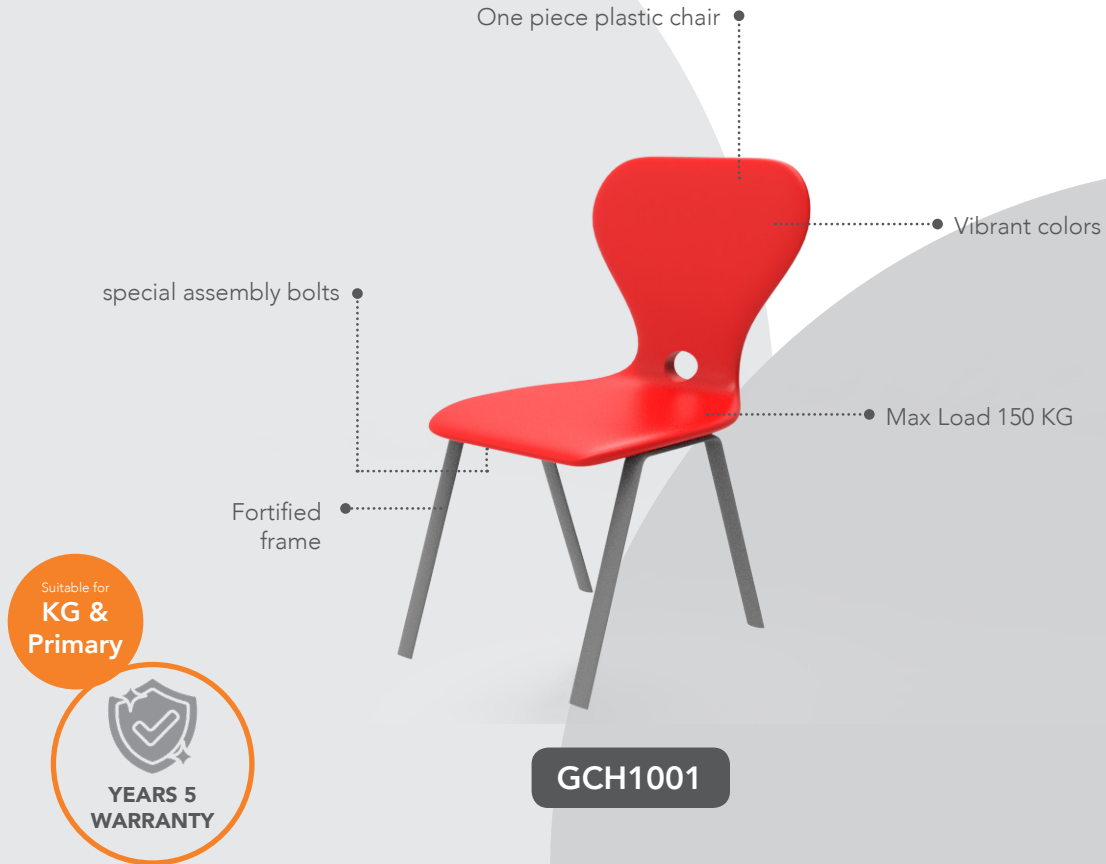
We specialize in providing innovative solutions for furniture for each part within the institutions in accordance with the needs of customers and the rules of modern design and manufacturing of products to meet the requirements of customers at all administrative levels, including furniture for upper and middle management rooms, work cells, meeting rooms, reception rooms, chairs, counters, reception desks, cabinets, and shelves. We also provide transportation, installation, and maintenance services.





## Class Furniture

### Students Chair



**GCH1001**

Size	Code	Dimensions		
		Width	Depth	Total Height
KG	GCH1001A	32,5 cm	32,5 cm	32 cm
Class 1 - 2 - 3	GCH1001B	32,5 cm	32,5 cm	36 cm



**Comfort**  
Exceptional ergonomics, providing users with an ideal seating position.



**Light weight**  
It is easy to move thanks to its light frame



**Secure connection**  
Optional tie-down device to help comply with health and safety standards.



**A friend of the environment**  
It uses less material than any other chair in its class, and is completely recyclable





## Class Furniture

### Students Chair



Suitable for  
**Prim  
Prep & Sec**



**GCH1002**

Size	Code	Dimensions		
		Width	Depth	Total Height
Primary Class	GCH1002A	39,5 cm	37 cm	38 cm
Preparatory Class	GCH1002B	39,5 cm	37 cm	42 cm
Secondary Class	GCH1002C	39,5 cm	37 cm	46 cm



#### Comfort

Exceptional ergonomics, providing users with an ideal seating position.



#### Light weight

It is easy to move thanks to its light frame



#### Secure connection

Optional tie-down device to help comply with health and safety standards.



#### A friend of the environment

It uses less material than any other chair in its class, and is completely recyclable





**Class Furniture**  
Students Chair



Suitable for  
**Prim  
Prep & Sec**



**GCH1003**

Size	Code	Dimensions		
		Width	Depth	Total Height
Primary Class	GCH1003A	39,5 cm	37 cm	38 cm
Preparatory Class	GCH1003B	39,5 cm	37 cm	42 cm
Secondary Class	GCH1003C	39,5 cm	37 cm	46 cm



**Comfort**  
Exceptional ergonomics, providing users with an ideal seating position.



**Light weight**  
It is easy to move thanks to its light frame



**Secure connection**  
Optional tie-down device to help comply with health and safety standards.



**A friend of the environment**  
It uses less material than any other chair in its class, and is completely recyclable





**Class Furniture**  
Students Chair



**GCH1004**

Suitable for  
**Prep & Sec**



Size	Code	Dimensions		
		Width	Depth	Total Height
Preparatory Class	GCH1004A	41,5 cm	41 cm	41 cm
Secondary Class	GCH1004B	41,5 cm	41 cm	45 cm



**Comfort**  
Exceptional ergonomics, providing users with an ideal seating position.



**Light weight**  
It is easy to move thanks to its light frame



**Secure connection**  
Optional tie-down device to help comply with health and safety standards.



**A friend of the environment**  
It uses less material than any other chair in its class, and is completely recyclable





**Class Furniture**  
Students Chair



**GCH1005**

Suitable for  
**Prep & Sec**



Size	Code	Dimensions		
		Width	Depth	Total Height
Preparatory Class	GCH1005A	41,5 cm	41 cm	41 cm
Secondary Class	GCH1005B	41,5 cm	41 cm	45 cm



**Comfort**  
Exceptional ergonomics, providing users with an ideal seating position.



**Light weight**  
It is easy to move thanks to its light frame



**Secure connection**  
Optional tie-down device to help comply with health and safety standards.



**A friend of the environment**  
It uses less material than any other chair in its class, and is completely recyclable





**Class Furniture**  
Students Chair



Suitable for  
**Secondary  
&  
University**



**GCH1006**

Size	Code	Dimensions		
		Width	Depth	Total Height
Secondary & University	GCH1006	39 cm	41 cm	45 cm



**Comfort**  
Exceptional ergonomics, providing users with an ideal seating position.



**Light weight**  
It is easy to move thanks to its light frame



**Secure connection**  
Optional tie-down device to help comply with health and safety standards.



**A friend of the environment**  
It uses less material than any other chair in its class, and is completely recyclable







**Class Furniture**  
Students Chair



Suitable for  
KG, Prim  
Prep & Sec



**GCH1007**

Size	Code	Dimensions		
		Width	Depth	Total Height
KG	GCH1007A	34,1 cm	35 cm	32 cm
Primary	GCH1007B	34,1 cm	35 cm	36 cm
Preparatory	GCH1007C	39,5 cm	41 cm	41 cm
Secondary	GCH1007D	39,5 cm	41 cm	45 cm



**Comfort**  
Exceptional ergonomics, providing users with an ideal seating position.



**Light weight**  
It is easy to move thanks to its light frame



**Secure connection**  
Optional tie-down device to help comply with health and safety standards.



**A friend of the environment**  
It uses less material than any other chair in its class, and is completely recyclable





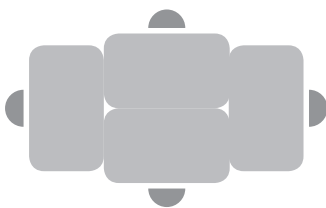
Suitable for  
**Prim  
Prep & Sec**



**GD1001**

Size	Code	Dimensions		
		Width	Depth	Total Height
Primary	GD1001A	70 cm	48 cm	68 cm
Preparatory	GD1001B	70 cm	48 cm	72 cm
Secondary	GD1001C	70 cm	48 cm	76 cm

**Group Setting**



**Pair Setting**



**Single Setting**





**GD1002**

Suitable for  
**Prim  
Prep & Sec**



Size	Code	Dimensions		
		Width	Depth	Total Height
Primary	GD1002A	70 cm	48 cm	68 cm
Preparatory	GD1002B	70 cm	48 cm	72 cm
Secondary	GD1002C	70 cm	48 cm	76 cm

**Group Setting**



**Pair Setting**



**Single Setting**





Suitable for  
**Prim  
Prep & Sec**



**GD1003**

Size	Code	Dimensions		
		Width	Depth	Total Height
Primary	GD1003A	70 cm	48 cm	68 cm
Preparatory	GD1003B	70 cm	48 cm	72 cm
Secondary	GD1003C	70 cm	48 cm	76 cm

**Group Setting**



**Pair Setting**



**Single Setting**





Suitable for  
**Prim**  
Prep & Sec



**GD1004**

Size	Code	Dimensions		
		Width	Depth	Total Height
Primary	GD1004A	70 cm	48 cm	68 cm
Preparatory	GD1004B	70 cm	48 cm	72 cm
Secondary	GD1004C	70 cm	48 cm	76 cm

**Group Setting**



**Pair Setting**



**Single Setting**





Suitable for  
**Prim**  
Prep & Sec



**GDD1001**

Size	Code	Dimensions		
		Width	Depth	Total Height
Primary	GDD1001A	120 cm	50 cm	68 cm
Preparatory	GDD1001B	120 cm	50 cm	72 cm
Secondary	GDD1001C	120 cm	50 cm	76 cm

**Group Setting**



**Pair Setting**



**Single Setting**





**GTD1001**

Size	Code	Dimensions		
		Width	Depth	Total Height
-----	GTD1001A	120 cm	60 cm	72 cm
-----	GTD1001B	120 cm	60 cm	75 cm





Suitable for  
KG  
& Primary



**GT1001**

Size	Code	Dimensions	
		Diameter	Total Height
KG	GT1001A	70 cm	58 cm
KG	GT1001B	80 cm	58 cm
Lower Primary	GT1001C	120 cm	62 cm

Group Setting 2



Group Setting



Single Setting





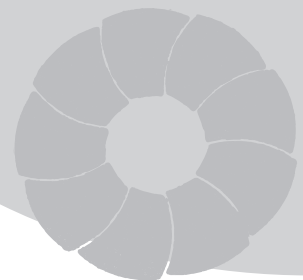


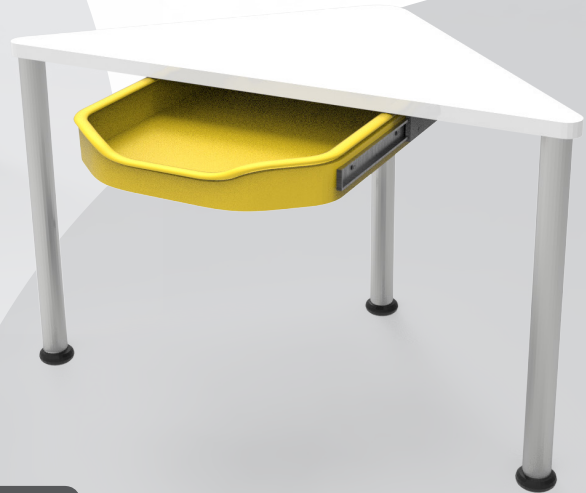
Suitable for  
KG, Prim  
Prep & Sec



**GT1002**

Size	Code	Dimensions		
		Width	Depth	Total Height
KG	GT1002A	103 cm	60 cm	58 cm
Primary	GT1002B	103 cm	60 cm	60 cm
Preparatory	GT1002C	103 cm	60 cm	66 cm
Secondary	GT1002D	103 cm	60 cm	72 cm



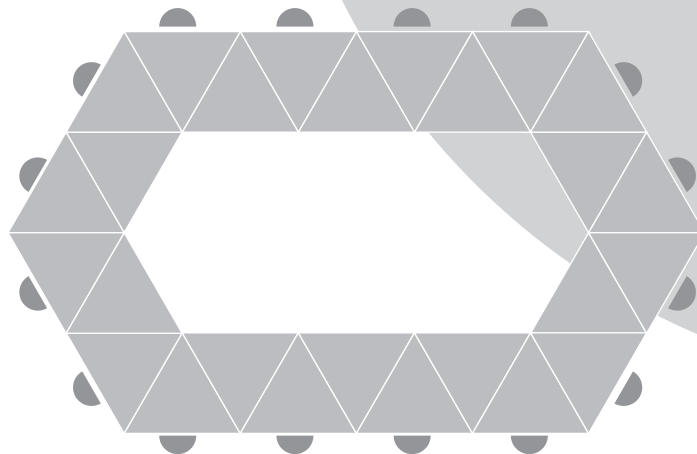


Suitable for  
KG, Prim  
Prep & Sec



**GT1003**

Size	Code	Dimensions		
		Width	Depth	Total Height
KG	GT1003A	82 cm	82 cm	58 cm
Primary	GT1003B	82 cm	82 cm	68 cm
Preparatory	GT1003C	82 cm	82 cm	72 cm
Secondary	GT1003D	100 cm	100 cm	76 cm

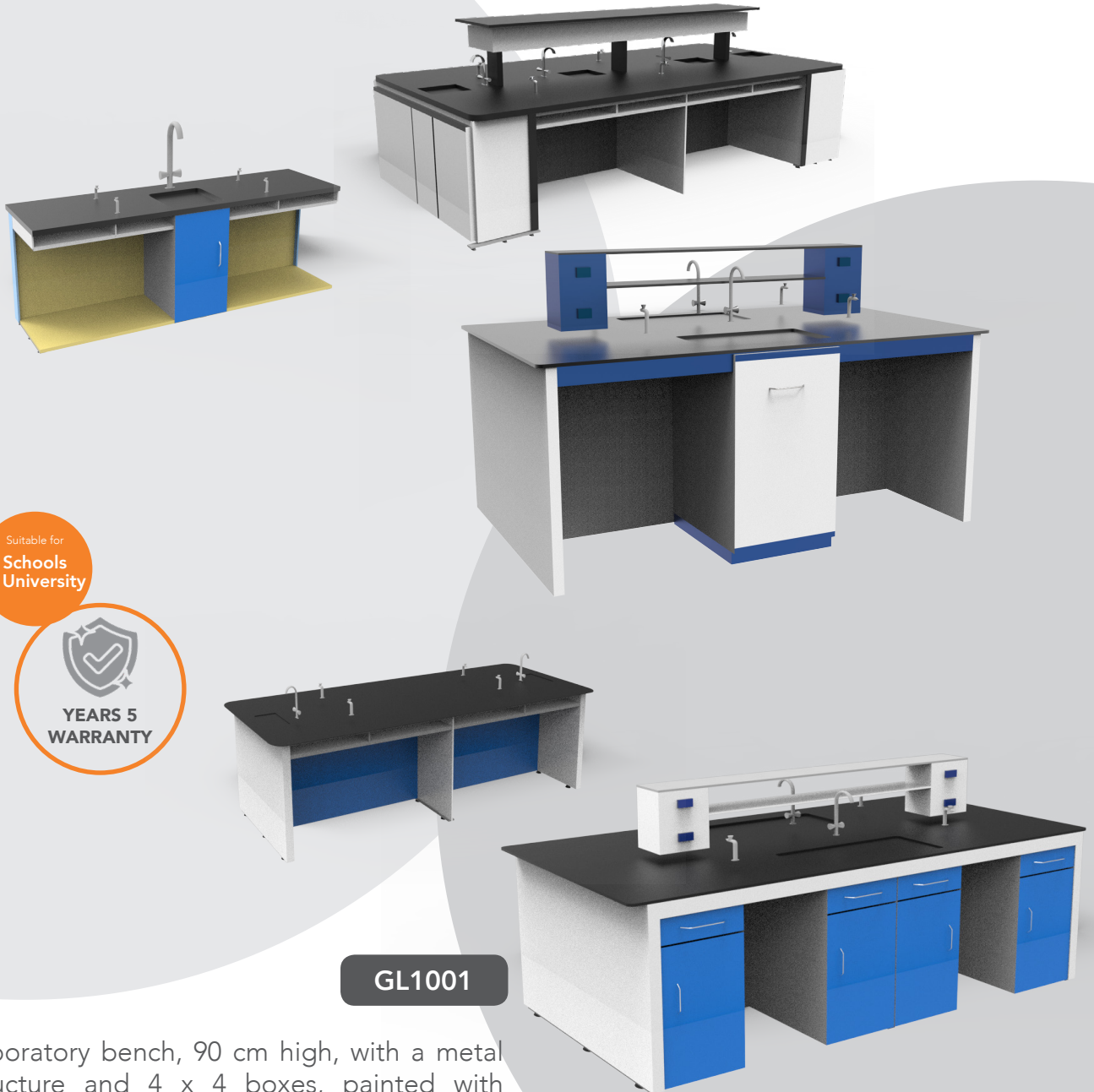




**GT1004**

Size	Code	Dimensions		
		Width	Depth	Total Height
-----	GT1004A	80 cm	60 cm	72 cm
-----	GT1004B	80 cm	100 cm	72 cm





Suitable for  
**Schools  
& University**



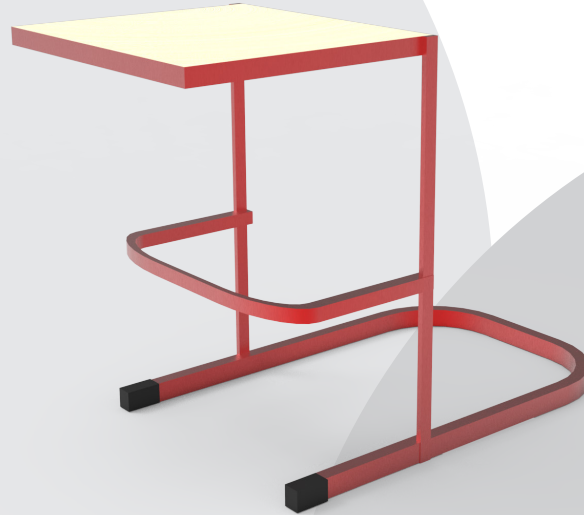
**GL1001**

Laboratory bench, 90 cm high, with a metal structure and 4 x 4 boxes, painted with electrostatic powder coated technology. The tablet is made of phenolic resin that is resistant to acids, alkalis, chemicals, pressure and shocks. The unit can be equipped with single or double taps, gas outlets, an electrical unit with safety switch or an acid and chemical resistant polypropylene laboratory sink with a polypropylene drain outlet. Metal or wooden units can also be added under the sinks.





## Laboratory Chair



Suitable for  
**Schools  
& University**



**GLC1001**

Size	Code	Dimensions		
		Width	Depth	Total Height
-----	GLC1001A	39,5 cm	37 cm	55 cm
-----	GLC1001B	39,5 cm	37 cm	60 cm
-----	GLC1001C	39,5 cm	37 cm	65 cm





## Laboratory Chair



Suitable for  
Schools  
& University



**GLC1002**

Size	Code	Dimensions	
		Diameter	Total Height
-----	GLC1002A	32 cm	55 cm
-----	GLC1002B	32 cm	60 cm
-----	GLC1002C	32 cm	65 cm





Suitable for  
**Schools  
& University**



**GOF001**

Size	Code	Dimensions		
		Width	Depth	Total Height
-----	GOF001A	120 cm	40 cm	200 cm
-----	GOF001B	240 cm	40 cm	200 cm





Suitable for  
**Schools  
& University**



**GOF003**

Size	Code	Dimensions		
		Width	Depth	Total Height
-----	GOF003A	120 cm	40 cm	120 cm
-----	GOF003B	120 cm	40 cm	140 cm
-----	GOF003C	120 cm	40 cm	160 cm







Suitable for  
Schools  
& University



**GOF004**

Size	Code	Dimensions		
		Width	Depth	Total Height
-----	GOF004A	80 cm	40 cm	180 cm
-----	GOF004B	80 cm	40 cm	200 cm





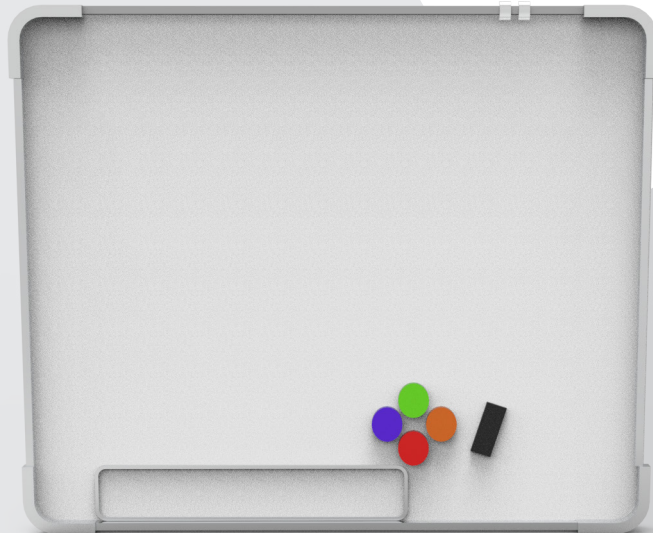
Suitable for  
**Schools  
& University**



**GOF005**

Size	Code	Dimensions		
		Width	Depth	Total Height
2 Drawers	GOF005A	50 cm	46 cm	75 cm
3 Drawers	GOF005B	50 cm	46 cm	120 cm
4 Drawers	GOF005C	50 cm	46 cm	140 cm





Suitable for  
**Schools  
& University**



**GOF006**

Size	Code	Dimension	
		Width	Total Height
-----	GOF006A	240 cm	120 cm
-----	GOF006B	200 cm	120 cm
-----	GOF006C	120 cm	120 cm
-----	GOF006D	120 cm	90 cm





Suitable for  
**Schools  
& University**



**GLO001**

**GLO002**

Size	Code	Dimensions		
		Width	Depth	Total Height
2 Drawers	GLO001	90 cm	185 cm	45 cm
3 Drawers	GLO002	30 cm	185 cm	45 cm





Suitable for  
**Schools  
& University**

  
**YEARS 5  
WARRANTY**

**GBF1001**

Bathroom dividers, made from 12 mm thick, water-resistant compact panels and are installed with stainless nickel accessories imported from abroad.

With clamps and metal spacers for installation.





Suitable for  
**Schools  
& University**

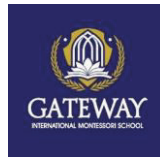


**GRD1001**

Doors made of natural beech wood, covered with a layer of Formica and Swedish wood fillings.



## Our success partners



The International School of Choueifat



**CADMUS<sup>®</sup>**  
INTERNATIONAL SCHOOL



**ASPIRE**  
INTERNATIONAL SCHOOL



## Client List

Badr University in Cairo
Pediatrics Hospital - Mansoura University
Health Labs - Ministry of Supply
Techno Farm Medical Industries
Medical professions - Abou Sultan
Afia Labs - Suez
Futures Language Schools
Modern School - El Helmia
El Waha School (Maadi)
MIU University
European German School (New Cairo)
Roots School
Nahda University (Bany Sweif)
Kaitbai School (New Cairo)
Saint Fatima School
Leaders School
Advance Education Schools
Canadian School
Rajac Schools
New Administrative Capital School
Al Shoiffat Internation School (New Cairo)
GEMS International School (Al Rehab)
Helsinki International School (Al Shorouk)

Coca Cola - Atlantic Free Zone
Suez Port
Arma Company for detergants and oils
Mebaco Medical Industries
GUC Labs
Kawmeia Schools - Alexandria
Gheriani Schools (New Cairo)
Modern School - Al Shorouk
Geil 2000 School (6 October)
New Generation School
Capreol School (New Cairo)
American School (Alexandria)
Angelic Sondos Nile School
Tiba Language School
Ebdaa School
Arab Academy for Science and Technology
British School (Alexandria)
Elite International Schools (Alexandria)
Al Awal School (Zagazig)
Cadmus Al Borouj School
Al Shoiffat Internation School (6 October)
GEMS International School (Madinaty)
Badr University in Assiuot







Factory  
362 Industrial area  
800 acres, Badr City



**GLOBAL<sup>®</sup>**  
**FURNITURE**  
**COMPANY**

[info@globalfurniture.com](mailto:info@globalfurniture.com)

010 664 66 320 